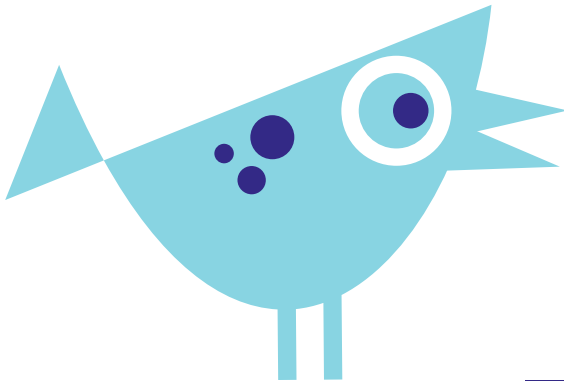


FOR MORE INFORMATION CONTACT:

POLK COUNTY HOUSING TRUST FUND

## OUR MISSION:

CREATE AND SUPPORT  
OPPORTUNITIES TO  
COLLABORATIVELY DEVELOP  
RESOURCES AND FACILITATE  
EFFECTIVE SOLUTIONS TO MAKE  
HOUSING AFFORDABLE.



### POLK COUNTY HOUSING TRUST FUND

108 Third St., Suite 350  
Des Moines, Iowa 50309

Office: **515.282.3233**

Fax: **515.282.8444**

**Sheila Lumley**, Executive Director  
slumley@pchtf.org

Visit us at our website [www.pchtf.org](http://www.pchtf.org)

## BOARD OF DIRECTORS

**E. J. Giovannetti**, Chair

**Stephanie Reynolds**, Vice Chair

**Victoria Facto**, Secretary

**Doug Sharp**, Treasurer

**Dean Armantrout**

**Angela Connolly**

**Creighton Cox**

**Larry Goodell**

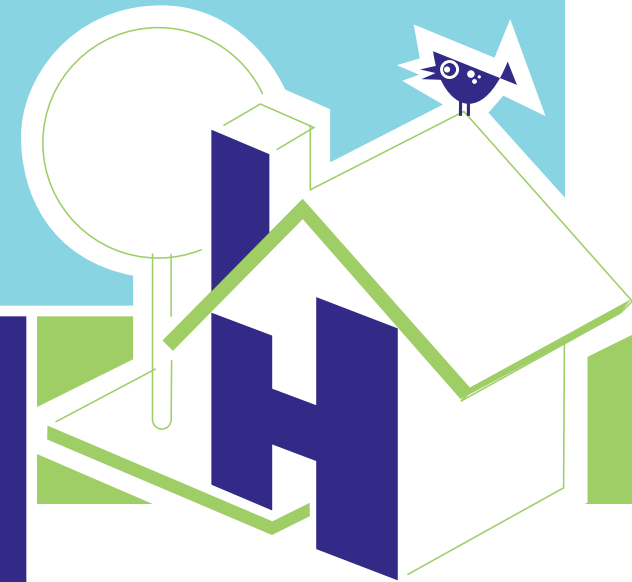
**Lance Henning**

**Christine Hensley**

**Gary Lorenz**

**Barbara Mueller**

**Robert Sherwood**



**WE MAKE  
HOUSING  
AFFORDABLE**



## OUR PROGRAMS

THE PROGRAMS OFFERED AT THE POLK COUNTY HOUSING TRUST FUND ARE DESIGNED TO MEET AFFORDABLE HOUSING NEEDS OF THE COMMUNITY. WE FUND PROJECTS THROUGHOUT POLK COUNTY.

### TECHNICAL ASSISTANCE FUND:

Funding for neighborhoods in the City of Des Moines, suburban communities, and unincorporated areas of Polk County, as well as non-profit organizations, to determine housing needs or pursue affordable housing projects tailored to meet the housing need within their area.

### PRE-DEVELOPMENT:

Funding is provided at the earliest possible stages in the development of a project before permanent financing can be secured. Activities include: options to purchase property, market analysis and engineering fees, architectural and engineering fees and legal fees, among others.

### DEVELOPMENT FUND:

Funding is provided in the form of grants or loans for acquisition, rehabilitation or new construction of single family homeownership, multi-family permanent and rental housing, owner-occupied repair, lead remediation, repair and maintenance of existing affordable rental and transitional housing.

### THE FUND:

Down payment and closing costs assistance for qualified buyers of vacant-foreclosed properties in designated areas of Polk County through the Rebuilding Communities Program.

## OPERATING, HOUSING SUPPORTIVE SERVICES AND CAPACITY BUILDING PROGRAM:

This program supports four non-profit housing providers who serve the lowest income families within Polk County. Funding is provided for:

1. Operating income which is designed to stabilize the operations of a non-profit
2. Housing supportive services such as case management, housing counseling, etc. which vary from organization to organization and are driven according to family needs
3. Capacity building designed to enable the non-profits to expand their current operations and to develop new services in the provision of affordable housing

### OUR NON PROFIT PARTNERS

Anawin Housing  
Greater Des Moines Habitat for Humanity, Inc.  
HOME, Inc.  
The Home Connection

### OUR PUBLIC PARTNERS

Polk County  
State Housing Trust Fund

### IN-KIND CONTRIBUTORS

Boesen The Florist  
Iowa Realty  
NorthStar Photography  
Polk County  
Prairie Meadows  
Saturday Mfg.  
Sayles Graphic Design, Inc.



## DONOR CLUB

**FOUNDERS** \$30,000 + (annually)

Prairie Meadows Race Track and Casino  
Community Foundation of Greater Des Moines  
Nationwide

Principal Financial Group Foundation  
United Way of Central Iowa

Wells Fargo Foundation on behalf of  
Wells Fargo Home Mortgage

Bankers Trust Company

**FRAMERS** \$10,000 - \$29,999 (annually)

Bank of America

Aviva USA Group Charitable Foundation

William C. Knapp Charitable Foundation

Gannett Foundation/The Des Moines Register

American Enterprise Group, Inc.

Andersen Corporate Foundation

West Bancorporation Foundation

**FINISHERS** \$100 - \$9,999 (annually)

Bank of the West

Allied Construction

Conlin Construction  
Services

Iowa State Bank

Des Moines Area  
Association of Realtors

Community State Bank

RDG Planning & Design

Snyder & Associates

Pioneer Hi-Bred

Wellmark Blue Cross and  
Blue Shield

Heartland Finishes, Inc.

Two Rivers Bank & Trust

EMC Insurance

Baker Group

First American Bank

Hubbell Realty  
Company

Foth Infrastructure &  
Environment LLC

Connie Wimer Trust

US Bank